

Used Vehicle Appraisal Books

This handy and convenient book is extremely versatile.

Part 3 stays in the book for your records.

Form #TC-47

- 4-1/4" x 7-3/4"
- 3 Part, Snap-Out, 25 per book, Carbonless – White, Canary, Pink
- Prints in Black Ink
- Packaged 1 book

Form #	Item #	Quantity Price Breaks
TC-47	8333	1, 5, 10, 25, 50 books

Stock Item

Form #TC-47

Form #298

- 4-1/4" x 8-1/2"
- 3 Part, Snap-Out, 25 per book, Carbonless – White, Canary, Pink
- Part 3 remains in book
- Prints in Black Ink
- Packaged 1 book

Form #	Item #	Quantity Price Breaks
298	8334	1, 5, 10, 25, 50 books

Stock Item

Form #298

Form #299

- 4-1/4" x 7-3/4"
- 2 Part, Snap-Out, 25 per book, Carbonless – White, Pink
- Part 2 remains in book
- Prints in Black Ink
- Packaged 1 book

Form #	Item #	Quantity Price Breaks
299	8335	1, 5, 10, 25, 50 books

Stock Item

Form #299

License Plate Frames

High quality **Raised Letter** or **Screen Printed** Polypropylene Plastic License Plate Frames.

- We can duplicate any frame. Models shown are samples of our most popular frames.
- Clips for easy mounting
- Unbreakable under normal use
- Frames fit 95% of all cars
- All frames are 6-1/8" x 12-1/4"
- Available in Black or White plastic only
- Standard print is one color

Colors available: yellow, orange, red, blue, green, brown, black, white and silver. Gold and chrome also available at additional charge.

Production Time: Approximately 14 working days after receipt of approved art.

Art Preparation: No charge for copy set in our standard type styles and logos. Extensive art prep is extra.

Color Change: Frame colors may be combined, minimum of 125 frames per color change.

Screen Printed: Silk-screen printing directly on frames.

Raised Letter: Raised Letter hot stamped.

Manufacturer is not responsible for fit or coverage problems. Random samples are available to insure your frame is the correct frame and complies with state regulations.

Item #	Description	Quantity Price Breaks
4870	Screen Printed Frame	250, 500, 1000, 2500, 5000
4875	Raised Letter Frame	"

Please specify colors (frame and printing) and Model number when ordering.



Model 1
5/8" panel all around



Model 2
Wide panel top or bottom
Wide panel is 1" tall. Small panel is 5/8" tall.



Model 3
Wide panel top or bottom
Wide panel is 1" tall. Small panel is 5/8" tall.



Model 4
Wide panel top or bottom
Wide panel is 1" tall. Small panel is 5/8" tall.



Model 5
Wide panel top or bottom
Wide panel is 1-1/4" tall. Small panel is 5/8" tall.



Model 6
Wide panel top or bottom
Wide panel is 1" tall. Small panel is 5/8" tall.

Car Plates

One of the most durable and high quality plates available on the market. Plates will not crack, chip, peel or break. Weather resistant. We can duplicate any current design or help you design you own.

- Polyethylene Construction
- Size 12" x 6"
- Standard print is one color
- Most standard PMS colors available
- Die-cut slots and rounded corners

Art Preparation: No charge for copy set in our standard type styles and logos. Extensive art prep is extra.



Item #	Description	Quantity Price Breaks
4880	.023" Plate	100, 250, 500, 1000, 2500
4883	.035" Plate	"
4885	.055" Plate	"

Commission Reports and Forms

Form #DSA-231N

- 11-5/8" x 8-1/2"
- 2 Part Carbonless (Canary, White)
- 2 File Holes
- Prints in Green Ink
- Packaged 50 per pack

This provides a complete summary of all commissions due by salespersons for each pay period.

Form #	Item #	Quantity Price Breaks
DSA-231N	560	50, 100, 200, 500, 1000

Stock Item

Commission Voucher

Form #CV-59

- 4-1/4" x 5-5/8"
- 3 Part Carbonless (White, Canary, Pink)
- 2 File Holes
- Prints in Blue Ink
- Packaged 100 per pack

This is a very accurate way to total sales commissions on each deal.

Form #	Item #	Quantity Price Breaks
CV-59	559	100, 200, 500, 1000, 2000

Stock Item

Advertising Window Stickers

Stock Items

Get attention quickly with these high quality window stickers.

Windshield Numbers and Slogans

- Removable Vinyl
- Durable and Weatherproof
- Easy On/Easy Off
- Shrink Wrapped 1 Dozen Per Pack

Item #	Quantity Price Breaks
5844	1, 5, 10, 20, 25 dz
5848	"



Item # 5848 (Happy Face)
6" Diameter



Item # 5844 (Sale Pennant)
8" x 15"



7-1/2" Fluorescent Green and Black Numbers

Number	Item #	Quantity Price Breaks
0	5831-00	1, 5, 10, 20, 25 dz
1	5831-01	"
2	5831-02	"
3	5831-03	"
4	5831-04	"
5	5831-05	"

Number	Item #	Quantity Price Breaks
6	5831-06	1, 5, 10, 20, 25 dz
7	5831-07	"
8	5831-08	"
9	5831-09	"
\$	5831-10	"



6 1/4" Red and White Die Cut Numbers

Number	Item #	Quantity Price Breaks
0	5835-00	1, 5, 10, 20, 25 dz
1	5835-01	"
2	5835-02	"
3	5835-03	"
4	5835-04	"
5	5835-05	"

Number	Item #	Quantity Price Breaks
6	5835-06	1, 5, 10, 20, 25 dz
7	5835-07	"
8	5835-08	"
9	5835-09	"
\$	5835-10	"

Item #	Quantity Price Breaks
5841-01	1, 5, 10, 20, 25 dz
5841-02	"
5841-03	"
5841-04	"
5841-05	"
5841-06	"
5841-07	"
5845-01	"
5845-02	"
5845-03	"
5845-04	"
5845-05	"
5845-06	"

Fluorescent Green and Black Slogans Size: 15" x 2-3/4"

5841-01

4 X 4

5841-02

REDUCED

5841-03

LOW MILEAGE

5841-04

LOADED

5841-05

SPECIAL

5841-06

SALE

5841-07

DEMONSTRATOR

Die Cut - Red and White Slogans Size: 3-1/2" x 13-1/2"

5845-01

4X4

5845-02

DOWN

5845-03

EXTRA CLEAN

5845-04

LOW MILES

5845-05

WE FINANCE

5845-06

WARRANTY

Oval Year Window Stickers

All color combinations are available for the past 10 years

- 5-1/2" high x 14" long
- Removable Vinyl
- Durable and Weatherproof
- Easy On and Easy Off
- Slit on Back for Easy Installation
- Shrink Wrapped 1 dozen per pack



Stock Items

2000

2001

2002

2003

2004

2005

2006

2007

2008

2009

2010

Stock Items

Navy Blue on Yellow

Year	Item #	Quantity Price Breaks
2000	580-00	1, 5, 10, 20, 25 dz.
2001	580-01	"
2002	580-02	"
2003	580-03	"
2004	580-04	"
2005	580-05	"
2006	580-06	"
2007	580-07	"
2008	580-08	"
2009	580-09	"
2010	580-10	"

2000

2001

2002

2003

2004

2005

2006

2007

2008

2009

2010

Stock Items

Red on Yellow

Year	Item #	Quantity Price Breaks
2000	581-00	1, 5, 10, 20, 25 dz.
2001	581-01	"
2002	581-02	"
2003	581-03	"
2004	581-04	"
2005	581-05	"
2006	581-06	"
2007	581-07	"
2008	581-08	"
2009	581-09	"
2010	581-10	"

2000

2001

2002

2003

2004

2005

2006

2007

2008

2009

2010

Black on Yellow

Year	Item #	Quantity Price Breaks
2000	582-00	1, 5, 10, 20, 25 dz.
2001	582-01	"
2002	582-02	"
2003	582-03	"
2004	582-04	"
2005	582-05	"
2006	582-06	"
2007	582-07	"
2008	582-08	"
2009	582-09	"
2010	582-10	"

Vehicle Stock Numbers



Actual Size Shown

Back

- 7" x 2"
- 2 Key Tags per stock number
- Available unnumbered or numbered 0000 thru 9999
- Pressure sensitive tape holds numbers to windshield
- Packaged 1000 per box

Entire stock number is produced on heavy duty stock for durability. Plastic sleeves may be used for added strength. Key rings not included.

7/8" Metal Key Ring

Stock Item



Item #140

Plastic Sleeve

- 2-3/16" x 1-5/16"
- Clear Plastic

Stock Item

SLV-1
Item #743

Form #	Series	Item #	Packaged	Quantity Price Breaks
VSN-0	0000-0999	440	1000 per set	1 set, 2 sets, 3 sets, 5 sets, 10 sets
VSN-1	1000-1999	441	"	"
VSN-2	2000-2999	442	"	"
VSN-3	3000-3999	443	"	"
VSN-4	4000-4999	444	"	"
VSN-5	5000-5999	445	"	"
VSN-6	6000-6999	446	"	"
VSN-7	7000-7999	447	"	"
VSN-8	8000-8999	448	"	"
VSN-9	9000-9999	449	"	"
VSN-N	No Numbers	450	"	"
Key Ring	N/A	140	250 per bag	500, 1000, 3000, 5000, 10,000
SLV-1	N/A	743	250 per box	250, 500, 1000, 3000, 5000

E-Z Find I.D. Tags



Stock Item

- 5-1/2" x 2"
- Available unnumbered or numbered 000 thru 3000
- Pressure sensitive tape holds numbers to windshield
- Has metal eyelet for added strength
- Packaged 500 per box

E-Z Find I.D. Tags contain 500 Tags and 500 Key Rings per box.

Description	Item #	Packaged	Quantity Price Breaks
No Numbers	467	500 per box	1, 2, 3, 4, 5 bx.
000-500	461	"	"
501-1000	462	"	"
1001-1500	463	"	"
1501-2000	464	"	"
2001-2500	465	"	"
2501-3000	466	"	"

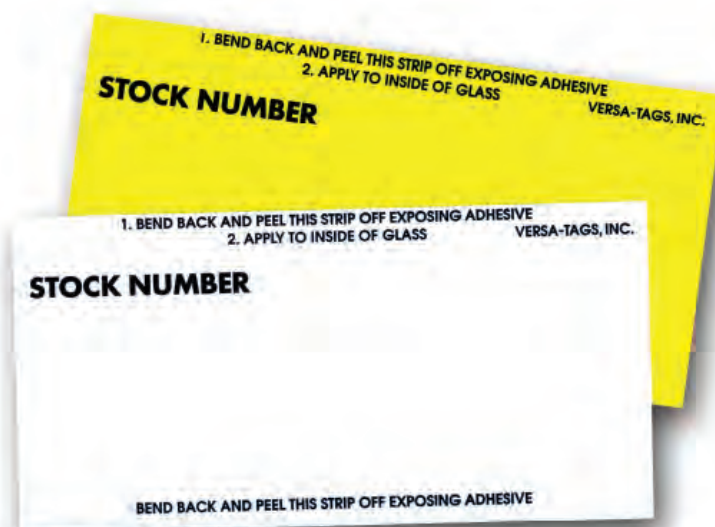
Stock Number Mini Signs

Economical, self-adhesive, plastic backed signs. Printed with no-fade inks. Can be left in place during test drives. Comes with 2 permanent black marking pens.

Form #650

- 6" x 3"
- Top and bottom self adhesive strips
- Packaged 250 per box

Stock Item

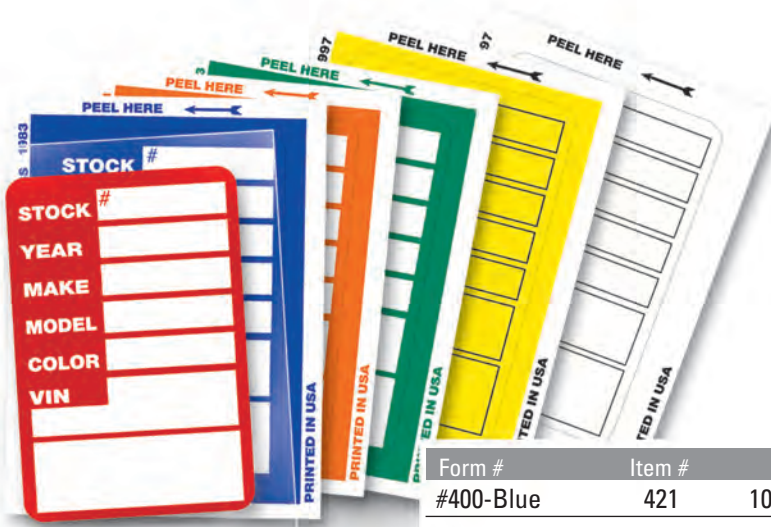


2 Fine Point Sharpie®
Pens with every
box of stickers

Form #	Item #	Quantity Price Breaks
#650-White	430	250, 500, 1000, 2000, 3000
#650-Yellow	431	250, 500, 1000, 2000, 3000

Kleer-Bak Stock Stickers

Colors won't fade.



Form #400

- 3" x 4"
- Available in Blue, Red, Green, Orange, White, Yellow
- Packaged 100 per pack

Clear plastic film with permanent adhesive seals sticker to the window on all four sides.

Form #	Item #	Quantity Price Breaks
#400-Blue	421	100, 500, 1000, 2000, 3000
#400-Red	422	"
#400-Green	423	"
#400-Orange	424	"
#400-White	425	"
#400-Yellow	426	"

Stock Item

No Smoking Reminders

Keep your rentals, loaners, and demos SMOKE FREE!

Form #NSSC (Static Cling)

- 2-1/2" x 1-1/2"
- Packaged 100 per pack



#NSSC No Smoking Static Cling

Form #6040 (Key Fob)

- 1" x 1-1/4"
- Rigid Plastic
- Packaged 250 per pack

Form #	Item #	Quantity Price Breaks
NSSC	1810	100, 500, 1000, 2000, 3000
#6040	155	250, 500, 1000, 2000, 3000

Stock Items



#6040 Key Fob

Consecu-Tags®

No set-up charge for numbers or letters!

Form #226 Consecu-Tags®

#227 Color-Top™ Consecu-Tags®

- 6" x 6"
- Key Tags fold to 1-1/4" x 3",
Stock Sticker 3" x 6"
- Consecu-Tags® Available in White, Orange,
Blue, Red, Green & Yellow
- Color-Top™ Consecu-Tags® Available in
Yellow, Red, Blue, Green, & Orange
- No set-up charge for any combination of up to
7 numbers or letters
- All numbers and letters are printed in black ink
- Numbers and letters are 1-1/2" tall
- Packaged 125 per box with Key Rings
- Available Unnumbered

Exciting patented product combines consecutive numbering with the durability of genuine Versa-Tags key tags! Two self-protecting key tags with "chrome"-plated steel rings match one clear plastic-backed window stock sticker for the best new key system ever!

Each Consecu-Tag® makes a clear plastic-backed window stock sticker AND two self-protecting key tags.

Form #	Item #	Quantity Price Breaks
226	4200	125, 250, 500, 1000, 2000
227	4201	"



Available in 6 Colors!



Form #226



Form #227

Available in 5 Colors!

Information Boxes on Window Sticker!



an industry revolution...

you'll wonder how you lived without it

Top Stripe™ Key Tags

These rigid vinyl key tags come in six different colors. Easy to write on.

Form #225

- 1 3/8" x 3"
- Available in Magenta, Blue, Green, Red, Orange, Black
- Packaged 250 per box
Includes 250 Rings & 2 Permanent Markers

Form #	Item #	Quantity Price Breaks
225-Magenta	4280	250, 500, 1000, 2000, 3000
225-Blue	4281	"
225-Green	4282	"
225-Red	4283	"
225-Orange	4284	"
225-Black	4285	"



Poly Tag Key Tags & Poly Stock Stickers

The ORIGINAL Round-Cornered Plastic Tag!
Compare our superior print quality.

Form #250 (Poly Tag Key Tag)

- 1-3/8" x 3"
- 23 mil Polyethylene
- Printed Fire Red Ink on Yellow or White Stock
- Packaged 250 per box, per color
Includes rings and 2 Fine Point Sharpie® Pens

Stock Items

Form #240 (Poly Stock Sticker)

- 3" x 2-7/8"
- 23 mil Polyethylene
- Printed Black Ink on Yellow or White Stock
- Packaged 250 per box, per color
Includes 2 Fine Point Sharpie® Pens

Stock Items

Form #	Item #	Quantity Price Breaks
#250-White Poly Tag Key Tag	435	250, 500, 1000, 2000, 3000
#250-Yellow Poly Tag Key Tag	436	"
#240-White Poly Stock Stickers	433	"
#240-Yellow Poly Stock Stickers	434	"

Genuine Versa-Tag®



Form #250



2 Fine Point Sharpie® Pens with every box of tags or stickers



Form #240

Colored Key Tags

A very high quality stock tag available in four colors to identify cars, trucks, new or used.

Form #CT-5

- 1-3/8" x 3"
- 10 Point Colored Paper Stock
- Includes rings
- Packaged 500 per box, per color

Stock Items

Form #	Item #	Quantity Price Breaks
CT-5-Blue	1490	500, 1000, 2000, 3000, 5000
CT-5-Green	1491	"
CT-5-White	1492	"
CT-5-Yellow	1493	"



Round
Corners
provide a
great look
and feel!



Genuine Versa-Tag® Key Tags

The Original And Still The Best!

Form #200

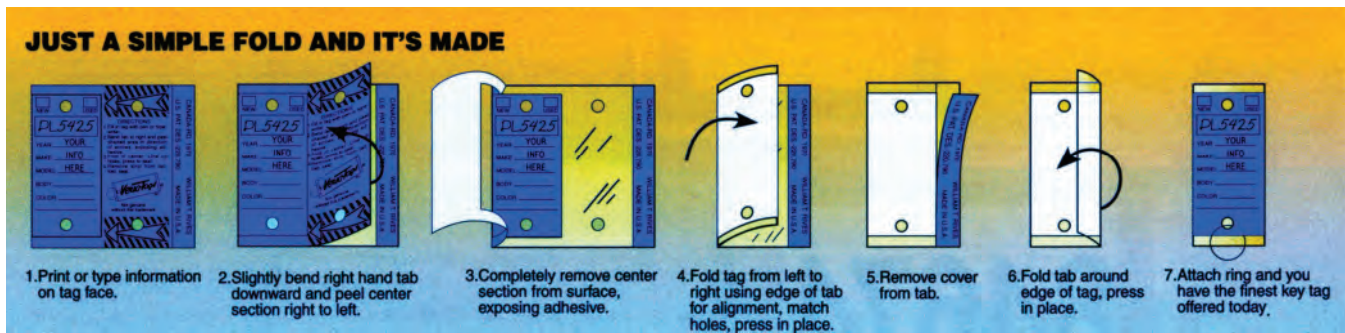
Stock Item

- 3" x 3" (Folds to 1-1/4" x 3")
- Available in Yellow, White, Red, Blue, Green, Orange, Tan, Gray, Lilac
- Packaged 250 per box
- 250 Rings included



Self Laminating Design
Protects Your Information

**"If it isn't a Versa-Tag®,
it isn't Genuine"**



Form #	Item #	Quantity Price Breaks
#200-Mixed	410	250, 1000, 2000, 3000, 5000
#200-White	411	"
#200-Yellow	412	"
#200-Blue	413	"
#200-Red	414	"

Form #	Item #	Quantity Price Breaks
#200-Green	415	250, 1000, 2000, 3000, 5000
#200-Orange	416	"
#200-Lilac	417	"
#200-Tan	418	"
#200-Gray	419	"

Mixed-Color Versa-Tag® Key Tags

Form #200-Mixed

Item #410

Mixed-Color Versa-Tags® are now available! Yellow, White, Red, Blue and Green Versa-Tags® (50 of each color) in ONE BOX!! (250 Versa-Tags® per box, with rings.)

Stock Item



Item #410

Sold/Hold Tags

Stock Items

- Printed Red Ink on Heavy Yellow Stock
- Prints **SOLD** on one side, **HOLD** on opposite side.



Form #	Item #	Description	Packaged	Quantity Price Breaks
#850	437	4" x 8" Jumbo Sold/Hold Tags	250/box	250, 500, 1000, 2000, 3000
#855	438	2-3/8" x 4-3/4" Mini Sold/Hold Tags	250/pack	"
#280-SH	439	8-1/2" x 11" Mirror Hanger Sold/Hold	50/pack	50, 100, 200, 500, 1000

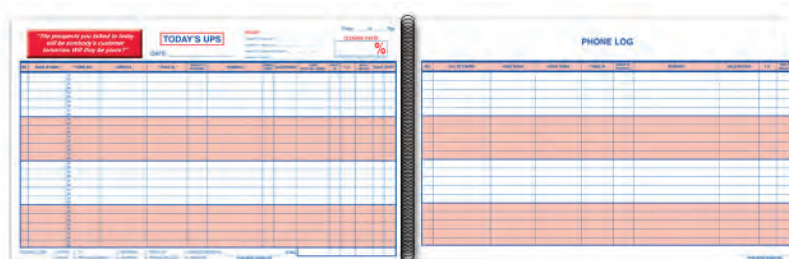
UPS Log Book/Customer Contact Log

Turn prospects into customers. This log book will definitely help your closing rate. Log book tracks walk-ins and phone-ins.

- 11" x 17"
- Prints in Red & Blue Ink
- 50 Sheets Printed Front & Back with 20 lines per sheet
- Packaged 1 Book

Stock Items

Item #	Description	Quantity Price Breaks
5860	UPS Log Book	1, 2, 5, 10, 25

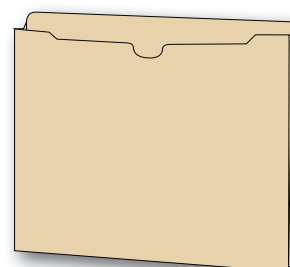


1" Expandable Deal Jacket (Custom Printed/Plain)

This 11 point Heavy Duty Deal Jacket is available Plain or Custom Printed. Expands up to 1" to allow for extra paper work or additional items.

- 11-3/4" x 9-1/2" Overall (Gusset Folded In)
- 11 Point Manilla Stock
- 1" Gusset
- Gusset needs to be folded prior to use
- Custom Jackets available in one color (Red, Blue or Black) in quantities of 100 and up
- Packaged 50 per carton

Stock Items



Plain

Custom Printed



"Sold Vehicle" Combination Form

Form #SV-8

- 8-1/2" x 8"
- 8 Part Carbon Interleaved
- Variable length throughout
- Prints Black Ink
- Shrink-Wrapped 100 per pack

This 8 part snap-out (packet) for sold vehicles saves time and money in processing. Contains a multipart odometer statement with each additional statement clearly identified for easy distribution. Premium grade carbon for legible copies on all parts.

Stock Item

Form #	Item #	Quantity Price Breaks
SV-8	4800	100, 200, 500, 1000, 2000

"Trade In Vehicle" Combination Form

Form #TIV-6

- 8-1/2" x 7-1/4"
- 6 Part Carbon Interleaved
- Variable length
- Prints Black Ink
- Shrink-Wrapped 100 per pack

This is a 6 part snap set (packet) and is used for trade-in vehicles. Contains a multipart odometer statement with each additional statement clearly identified. Premium grade carbon is used for legible copies on all parts.

Stock Item

Form #	Item #	Quantity Price Breaks
TIV-6	4801	100, 200, 500, 1000, 2000

Vehicle Deal Envelopes (Deal Jackets)

Choose from 10 different colors to define cars, trucks, used cars, years etc. Available in printed or blank stock.

Form #DSA-546 (Pre-printed)

- 9" x 12"
- Prints in Black Ink
- Standard package is 500 per box

Stock Item

Form #DSA-500 (Blank/Plain)

- 9" x 12"
- Packaged 500 per box



High quality, 32# Deal Jackets have thumb indentation for easy opening and all of the pertinent information printed on the front.

Use our blank envelopes and affix your own labels or hand write your own information

Printed

Form # & Color	Item #	Quantity Price Breaks
DSA-546-Buff	511	100, 500, 1000, 2000, 5000
DSA-546-Blue	512	"
DSA-546-Green	513	"
DSA-546-Pink	514	"
DSA-546-White	515	"
DSA-546-Lavender	516	"
DSA-546-Salmon	517	"
DSA-546-Fuchsia	518	"
DSA-546-Gray	519	"
DSA-546-Yellow	520	"

Plain

Form # & Color	Item #	Quantity Price Breaks
DSA-500 Buff	521	100, 500, 1000, 2000, 5000
DSA-500 Blue	522	"
DSA-500 Green	523	"
DSA-500 Pink	524	"
DSA-500 White	525	"
DSA-500 Lavender	526	"
DSA-500 Salmon	527	"
DSA-500 Fuchsia	528	"
DSA-500 Gray	529	"
DSA-500 Yellow	530	"

Start Saving Today!

3-in-1 Deal Envelope (Deal Jacket)

Form #237

Stock Item

- 9" x 12"
- Prints in Black Ink
- Standard Package 500 per box

Provides all information on sale of New or Used vehicle including reconditioning of used vehicle, detail of cost, and may serve as vehicle inventory record. Available in Buff only.

Form #	Item #	Quantity Price Breaks
237	543	100, 500, 1000, 2000, 5000

License Plate Envelopes

Stock Item

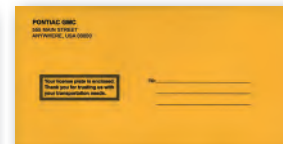
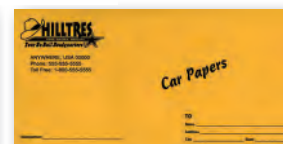
Form #LPEV-1 (Plain or Imprinted)

- 13" x 6-1/2"
- Available with custom printing in Black, Red or Blue Ink on quantities of 500 and up
- Packaged 100 per box

Heavy Duty Brown Kraft Envelope...A perfect fit for any license plate. Available with return address imprinted in the upper left corner. Packed in handy boxes of 100 envelopes.



Printed Samples



Form #	Item #	Quantity Price Breaks
LPEV-1	831	100, 500, 1000, 2000, 3000
LPEV-1 Imprinted	831-IMP	500, 1000, 2000, 3000, 5000

Heavy Duty Deal Envelope (Deal Jacket)

These Heavy Duty Deal Jackets are very durable and can handle almost any amount of paperwork. Available in five colors with your choice of printed or blank stock.

Form #SA1221-HD (Pre-printed)

- 100# Stock
- 9" x 12" with 3/8" Extension
- Prints in Black Ink
- Standard Package is 500 per box

Stock Items

Form #SA1220-HD (Blank/Plain)

- 100# Stock
- 9" x 12" with 3/8" Extension
- Standard Package is 500 per box

Available in
Quantities of
100 & Up!!

Printed

Form #	Item #	Quantity Price Breaks
SA1221-HD Buff	5511	100, 500, 1000, 2000, 5000
SA1221-HD Blue	5512	"
SA1221-HD Green	5513	"
SA1221-HD Pink	5514	"
SA1221-HD White	5515	"

Plain

Form #	Item #	Quantity Price Breaks
SA1220-HD Buff	5521	100, 500, 1000, 2000, 5000
SA1220-HD Blue	5522	"
SA1220-HD Green	5523	"
SA1220-HD Pink	5524	"
SA1220-HD White	5525	"

Custom Heavy Duty Deal Envelope (Deal Jacket)

Tailor your deal jacket to meet your specific needs. We can help you design your own or match any existing deal jacket.

Form #SA1220-HD-C

- 100# Stock
- 9" x 12" with 3/8" Extension
- Prints one side standard, second side at additional charge
- 1 color printing – Black, Blue or Red Ink
- Packaged 500 per box

QUICK
TURN-AROUND
TIME!

Form #	Item #	Quantity Price Breaks
SA1220-HD-C Buff	5531	500, 1000, 2000, 3000, 5000
SA1220-HD-C Blue	5532	"
SA1220-HD-C Green	5533	"
SA1220-HD-C Pink	5534	"
SA1220-HD-C White	5535	"

After Hours Shopper Box

NEW!!

Don't miss out on those customers that visit your lot after hours. This system provides an easy secure way to capture those leads and to turn them into sales. Customers simply fill out the Customer Lead Card and Drop it in the box. The next morning a Sales member checks the box, follows up on the leads and completes the Sale!!

Durable steel box with pull-down door for storage and customer convenience to fill out customer lead cards.

Can be Wall or Pedestal mounted.



- 25-1/4" H x 15" W x 12" D
- 50 Customer Lead Cards & 1 Pen with Chain Included
- Tamper-proof Front Master Lock
- All Steel Construction (No plastic flaps to break)
- Packaged 1 per box
- Keeps Customer information secure and readable

**A MUST
for anyone
selling Cars!!!**

Posts must be ordered separately for Pedestal Style Mounts.

Hardware to secure box to post is included with post.



Durable 4" Steel Tubing

Item #	Description	Quantity Price Breaks
7315	After Hours Shopper Box Only	1, 2, 4, 6, 10
7321	24" Surface Mount Post	"
7322	36" Inground Post	"
7230	Cust. Lead Cards	100, 200, 500, 1000, 2000
7230-C	Pers. Cust. Lead Card	500, 1000, 2000, 3000, 5000

Due to the various ways of mounting Night Drop Boxes, we DO NOT include mounting hardware.

Customer Lead Cards

These heavy duty cards are great for keeping track of potential customers. Capture customer name, contact information and vehicles of interest in this simple to use card. Cards can be used in sales offices or with After Hours Shopper Box.

Form #CLC

- 8-1/2" x 5-1/2"
- 1 Part, Heavy Stock Card
- Prints in Blue Ink
- Available personalized in Red, Blue or Black Ink in quantities of 500 and up
- Packaged 100 per pack

Easy to use card that captures the customers critical information.

Please fill out this card and someone will contact you during our regular business hours.

First Name _____ Last Name _____ E-Mail _____

Address _____ City _____ State _____ Zip _____

Home Phone _____ Cell Phone _____ Work Phone _____

☐ I am interested in a vehicle on your lot. (Please provide as much information as possible)

Stock # _____ Year _____ Color _____

Model _____ Make _____

☐ I am interested in a vehicle that I don't see on your lot, here is what I am looking for:

Year _____ Make _____ Model _____

Preferred Color (s) _____ Interior Color (s) _____

Cylinders ☐ 4 ☐ 6 ☐ 8 Doors ☐ 2 ☐ 4

☐ Tilt ☐ Cruise ☐ CD ☐ Moon Roof ☐ A/C ☐ Power Windows ☐ Power Locks

Other Requests _____

Form CLC (3/10/07) Item #7230

Item #7230

Addendum Stickers

These high quality preprinted addendum stickers are the most commonly used in the automotive industry.

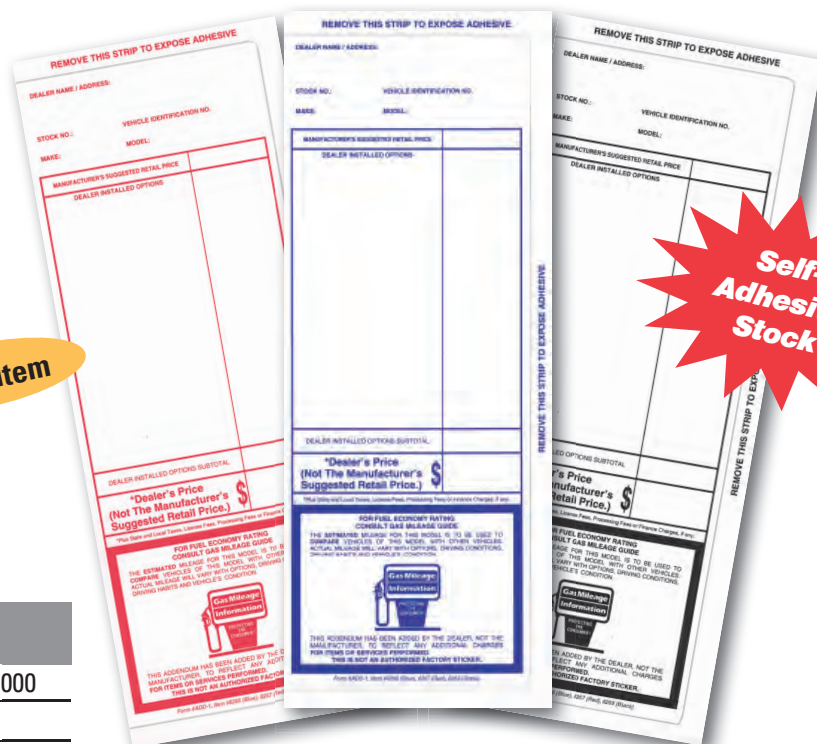
Form #ADD-1 (Plain or Custom)

- 4-1/4" x 11" Overall
- 1 Part Self Adhesive, 3 sides
- Stock design pictured
- Prints in Red, Blue or Black Ink
- Custom stickers available in one color (Red, Blue or Black) in quantities of 500 and up
- Packaged 100 per pack

Stock Item

This sticker will not fall off or affect the operation of the windows. The sticker is made of heavy white stock and looks great.

Form #	Item #	Quantity Price Breaks
ADD-1-Blue	8266	100, 200, 300, 500, 1000
ADD-1-Red	8267	"
ADD-1-Black	8268	"
ADD-1 Custom	8269-C	500, 1000, 2000, 3000, 5000



Use our stock sticker or personalize one with your dealership name, address, dealer added equipment, etc...

We can duplicate your existing sticker or custom design a sticker to meet your needs.

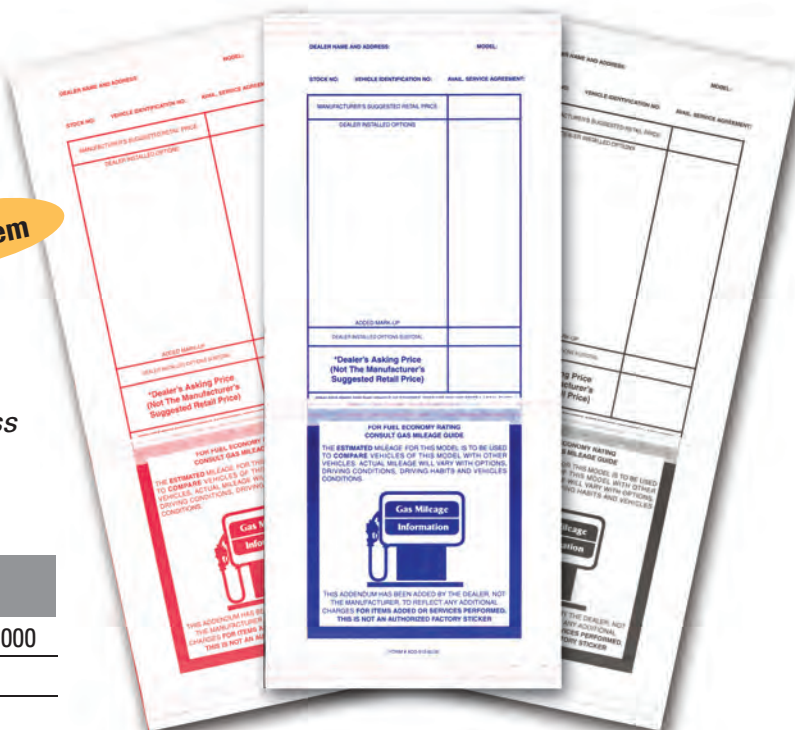
This add on sticker contains space for dealer installed options in easy to read format. Coordinates with manufacturer's sticker.

Form #ADD-512

Stock Item

- 5-1/2" x 12-1/2"
- 1 Part White Ledger Stock
- Prints in Red, Blue or Black Ink
- 3 adhesive strips for adhering to glass
- Packaged 100 per pack

Form #	Item #	Quantity Price Breaks
ADD-512-Blue	8256	100, 200, 300, 500, 1000
ADD-512-Red	8257	"
ADD-512-Black	8258	"



Buyers Guide

Stock Items

Form #BG-1985

- 7-1/3" x 11-3/4"
- 2 Part Carbonless – White, White with 2 position permanent adhesive tape top & bottom
- Prints in Black Ink with Grey back
- Packaged 100 per pack

Form #	Item #	Quantity Price Breaks
BG-1985	8250	100, 300, 500, 1000, 2000
BG-1985 Spanish	8251	"
BG-1985-IW	8253	"

Form #BG-1985-IW (Implied Warranty)
Item #8253

Form #BG-1985
Item #8250

Form #BG-1985-Spanish
Item #8251

This is the Spanish Version of BG-1985.
Complies with all requirements.

1-Part Pressure Sensitive Buyers Guide

Buyers Guide with "Permanent Adhesive On All 4 Sides" to adhere to the inside of the vehicle window. Laser compatible.

Form #BG-1985 P/A

- 8-1/2" x 11"
- 1 Part Self Adhesive
- Fade Resistant
- Prints in Black Ink with Grey back
- Packaged 100 per pack

Stock Item

Also available with no lines.

Form #	Item #	Quantity Price Breaks
BG-1985 P/A	8252	100, 300, 500, 1000, 2000
BG-1985 P/A No Lines	8252-NL	"
BG-1985 P/A Spanish	8252-SP	"
BG-1985 P/A Spanish No Lines	8252-SP-NL	"
BG-Implied Warranty	8254	"
BG-Imp. War. No Lines	8254-NL	"

Custom Window Stickers

This blank white window sticker can be used for a variety of applications. This form has peel off adhesive strips on all four sides to be adhered to the window on the inside of the vehicle. This form is laser compatible and can be printed by you or we can preprint any information front or back that you need.

Form #8511 (Plain or Custom)

- 8-1/2" x 11"
- 1 Part Self Adhesive
- Fade Resistant
- Available custom printed in Black, Blue or Red ink in quantities of 500 and up
- Packaged 250 per pack

Customize your window sticker any way you like. Create your own "Buyers Guides" window forms or "Added Equipment Decals".

Form #	Item #	Quantity Price Breaks
8511	8300	250, 500, 1000, 2000, 3000
8511-Custom	8305	500, 1000, 2000, 3000, 5000

Adhesive may damage aftermarket inside window tinting. Test all applications before use.

We Owe / You Owe

Form #872 (Plain or Imprinted)

Stock Item

- 8-1/2" x 11-1/2"
- 3 Part Snap-Out
- Carbonless – White, Canary, Pink
- Prints Blue and Red Ink
- Available with 4 line dealer imprint in black ink on quantities of 500 and up.
- Packaged 100 per pack

Get it in writing! Avoid not getting essential paperwork or other items on a trade or when delivering a vehicle.

This form insures that the customer also knows what they OWE YOU!

Form #	Item #	Quantity Price Breaks
872	872	100, 300, 500, 1000, 2000
872 Imprinted	872-IMP	500, 1000, 2000, 3000, 5000

(4 Line Imprint Available Here)

WE OWE

NAME _____ STK. NO. _____ NEW _____ USED _____
 ADDRESS _____ YEAR _____ MAKE _____
 CITY _____ ZIP _____ MODEL _____
 PHONE _____ SERIAL NO. _____
 SALESMAN _____ DEL. DATE _____

QTY.	NAME OF ITEM	PART	LABOR

No verbal promises or representations have been made except
 I hereby accept this WE OWE with the understanding that it is valid for only (30) THIRTY DAYS FROM DATE OF ISSUANCE,
 and that I must make an ADVANCE APPOINTMENT WITH THE SERVICE DEPARTMENT before the above work can be performed.
 (FOR APPOINTMENT CALL SERVICE DEPT.)

YOU OWE

YOU OWE	TO BE REPAIRED	YOU OWE	TO BE REPAIRED
1) Title to Trade In Vehicle	DATE _____ TIME _____	4) Other	DATE _____ TIME _____
2) All Monies		5) Other	
3) Valid Insurance Card		6) Other	

I hereby agree to provide such items in a timely manner.

CUSTOMER _____ DATE _____
 APPROVED _____

FORM #WEYOU MADE IN U.S.A. ITEM #872

We Owe

Avoid confusion by making promises in writing!

Form #SA-1506-3 (Plain or Imprinted)

- 5-2/3" x 9-1/4"
- 3-Part snapout, varying length on part 2
- Carbonless, White, Canary, White Tag
- Prints Blue and Red Ink
- Available with 4 line Imprint in Black Ink on quantities of 500 and up
- Packaged 100 per pack

Form #	Item #	Quantity Price Breaks
SA-1506-3	870	100, 300, 500, 1000, 2000
SA-1506-3 Imprinted	870-IMP	500, 1000, 2000, 3000, 5000

(4 Line Imprint Available Here)

WE OWE

NAME _____ STK. NO. _____ NEW _____ USED _____
 ADDRESS _____ STATE _____ YEAR _____ MAKE _____
 CITY _____ ZIP _____ MODEL _____
 PHONE _____ SERIAL NO. _____
 SALESMAN _____ NAME OF ITEM _____ DEL. DATE _____

QTY.	NAME OF ITEM	PART	LABOR

I hereby accept this WE OWE with the understanding that it is valid for only (30) THIRTY DAYS FROM DATE OF ISSUANCE, and that I must make an ADVANCE APPOINTMENT WITH THE SERVICE DEPARTMENT before the above work can be performed.
 (FOR APPOINTMENT CALL SERVICE DEPT.)

CUSTOMER _____ DATE _____
 APPROVED _____

FORM SA-1506 MADE IN U.S.A. ITEM #872

Stock Item

Internal Authorization Book

This book provides a permanent written record of who authorized work to be done, equipment added or removed from the vehicle.

Form #125

- 8-1/2" x 11"
- 3 Part, 100/book, Pre-Numbered Perforated at 5-1/2" on Parts 1 & 2, Part 3 remains in book
- No selection of starting number
- Carbonless - White, Canary, Pink
- Prints in Blue & Red Ink
- Packaged 1 book

Stock Item

Form #	Item #	Quantity Price Breaks
125	655	1, 5, 10, 15, 25 books

Avoid Verbal Orders Book

This convenient compact size book provides a permanent written record of instructions.

Form #AVO

- 7" x 4-1/4"
- 2 Part, 50/book, Part 1 is Perforated for easy removal, Part 2 remains in book
- Carbonless - White, Canary
- Prints in Blue & Red Ink
- Packaged 1 book

Wrap around cover allows you to write on each 2 part form without writing through to the next set.

Form #	Item #	Quantity Price Breaks
AVO	874	1, 5, 10, 15, 25 books

Mirror Hang Tags (Jumbo)

Stock Items

These big fluorescent hang tags get great visual attention!

Mix different tags for quantity price breaks.

- 8-1/2" x 11-1/2"
- Printed Black Ink on Heavy Red, Green, Yellows & Pink Fluorescent Stocks
- Packaged 50 per pack

All tags below come in four colors:

R - Red
 G - Green
 Y - Yellow
 P - Pink



Form #280-WN



Form #280-CL



Form #280-SA



Form #280-SP



Form #280-RD



Form #280-AA



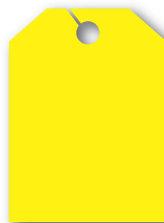
Form #280-FA



Form #280-LD



Form #280-NH



Form #280-B



*Form #280-RSA



*Form #280-RSP

* Available in Fluorescent Red Only

Form #	Item #	Quantity Price Breaks
#280-WN-R	7500-R	50, 100, 200, 500, 1000
#280-WN-G	7500-G	"
#280-WN-Y	7500-Y	"
#280-WN-P	7500-P	"
#280-CL-R	7501-R	"
#280-CL-G	7501-G	"
#280-CL-Y	7501-Y	"
#280-CL-P	7501-P	"
#280-SA-R	7502-R	"
#280-SA-G	7502-G	"
#280-SA-Y	7502-Y	"
#280-SA-P	7502-P	"
#280-SP-R	7503-R	"
#280-SP-G	7503-G	"
#280-SP-Y	7503-Y	"
#280-SP-P	7503-P	"
#280-RD-R	7506-R	"
#280-RD-G	7506-G	"
#280-RD-Y	7506-Y	"
#280-RD-P	7506-P	"
#280-FA-R	7507-R	"

Form #	Item #	Quantity Price Breaks
#280-FA-G	7507-G	50, 100, 200, 500, 1000
#280-FA-Y	7507-Y	"
#280-FA-P	7507-P	"
#280-AA-R	7508-R	"
#280-AA-G	7508-G	"
#280-AA-Y	7508-Y	"
#280-AA-P	7508-P	"
#280-LD-R	7509-R	"
#280-LD-G	7509-G	"
#280-LD-Y	7509-Y	"
#280-LD-P	7509-P	"
#280-NH-R	7510-R	"
#280-NH-G	7510-G	"
#280-NH-Y	7510-Y	"
#280-NH-P	7510-P	"
#280-B-R	7511-R	"
#280-B-G	7511-G	"
#280-B-Y	7511-Y	"
#280-B-P	7511-P	"
#280-RSA	7504	"
#280-RSP	7505	"

Mirror Hang Tags

Stock Items

- 8-1/2" x 11-1/2"
- Printed on Heavy Stock
- Packaged 50 per pack



Form #	Item #	Description	Packaged	Quantity Price Breaks
#280-4TH	7550	8-1/2" x 11-1/2" Mirror Hanger Fireworks	50/pack	50, 100, 200, 500, 1000
#280-FLAG	7551	8-1/2" x 11-1/2" Mirror Hanger Sale/Flag	50/pack	"
#280-SH	439	8-1/2" x 11-1/2" Mirror Hanger Sold/Hold	50/pack	"

Custom Mirror Hang Tags (Jumbo)

These big fluorescent and white hang tags can be customized any way you like! This allows us to print what you want to say.

- 8-1/2" x 11-1/2"
- Available Tag Colors are Fluorescent Yellow, Fluorescent Pink, Fluorescent Green, Fluorescent Red and White
- Prints in Black Ink one side, second side at additional charge
- Packaged 250 per pack, minimum order of 250



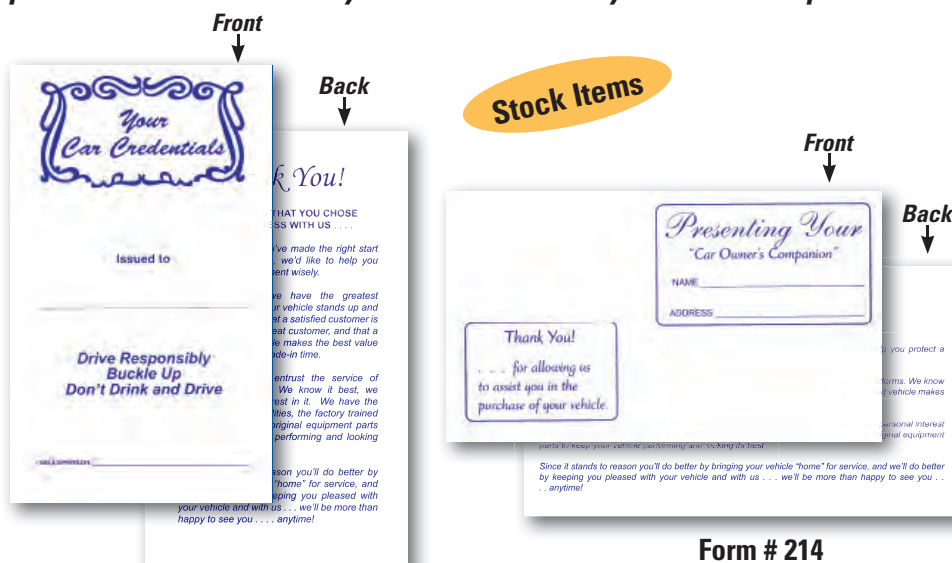
Form #	Item #	Description	Quantity Price Break
#280-C Yellow	7590-Y	8-1/2" x 11-1/2" Yellow Custom Mirror Hanger	250, 500, 1000, 2000, 3000
#280-C Pink	7590-P	8-1/2" x 11-1/2" Pink Custom Mirror Hanger	"
#280-C Green	7590-G	8-1/2" x 11-1/2" Green Custom Mirror Hanger	"
#280-C Red	7590-R	8-1/2" x 11-1/2" Red Custom Mirror Hanger	"
#280-C White	7590-W	8-1/2" x 11-1/2" White Custom Mirror Hanger	"

Vehicle Paper Wallet

These heavy white textured paper wallets will remind your customers of your dealership for years to come.

Generic (In Stock)

- 10-1/2" x 11-1/2" Overall
- 10-1/2" x 6" Folded
- Heavy White Textured Stock
- Stock design pictured
- Prints in Blue Ink
- Packaged 50 per pack



Form #213

Form # 214

Form #	Item #	Quantity Price Breaks
213	470	50, 100, 300, 500, 1000
214	471	"

Provide your customers with your businesses name, address and telephone numbers along with department hours and special services. We can match your existing wallet or help you design your own.

Custom

- 10-1/2" x 11-1/2" Overall
- 10-1/2" x 6" Folded
- Heavy White Textured Stock
- Prints in Blue, Red or Black Ink
- Packaged 100 per pack, minimum quantity 500



Build goodwill with your customers and obtain long term advertising by using these beautiful custom textured Vehicle Paper Wallets.

Form #	Item #	Quantity Price Breaks
Custom Wallet	473	500, 1000, 2000, 3000, 5000

We can duplicate your existing wallet or custom design a wallet to meet your needs. All imprints and designs other than block style lettering must be received in JPG, EPS, TIFF or PDF format.

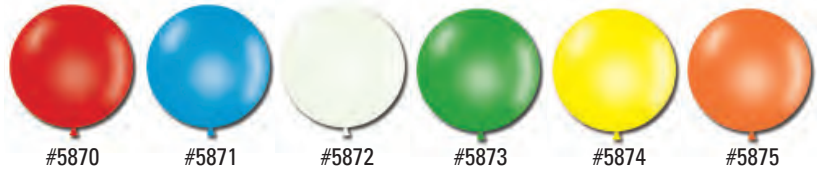
Jumbo Balloons

Stock Items

These premium latex balloons are high strength, have easy to tie long necks and are the fullest, roundest shapes and sizes available. All in vibrant colors with long flight times.

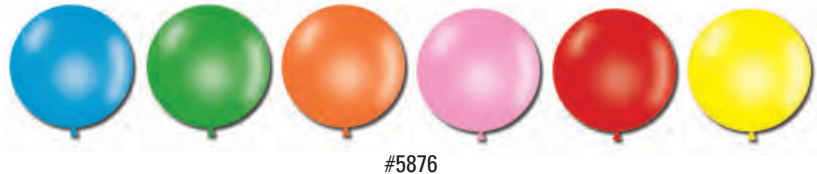
17" Latex Balloons

- Six Standard Colors to Choose - Red, White, Blue, Green, Orange & Yellow
- Packaged 72 per bag



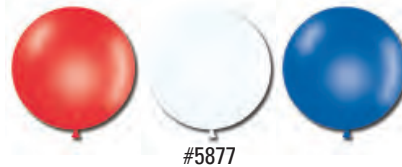
17" Assorted Latex Balloons

- Assortment Includes Standard Colored Blue, Green, Orange, Pink, Red & Yellow Balloons
- Packaged 72 per bag



17" Patriotic Assorted Latex Balloons

- Assortment Includes Crystal Red, White & Sapphire Blue Balloons
- Packaged 72 per bag



Balloon String

- Cone of String Approximately 10,000 ft.
- 4 Ply Cotton construction



Item #	Description	Quantity Price Breaks
5870	17" Balloon - Red	1, 3, 5, 10, 20 pks
5871	17" Balloon - Blue	"
5872	17" Balloon - White	"
5873	17" Balloon - Green	"
5874	17" Balloon - Yellow	"

Item #	Description	Quantity Price Breaks
5875	17" Balloon - Orange	1, 3, 5, 10, 20 pks
5876	17" Assorted 6 Colors	"
5877	17" Patriotic Assortment	"
5880	Balloon - String	1, 2, 5, 7, 10

Clip-On Window Flags

Stock Items

Great for vehicles with retractable antennas or if you are concerned about damaging any antennas. Easily attaches to any car or truck side window with plastic molded clip. Works on all vehicles.

- Durable heavy duty cloth flag
- Sturdy tall white plastic staff with molded clip
- Packaged 12 per box

Colorful flags clip easily onto car windows and come completely assembled! These flags are durable, have vibrant colors and are long lasting.

Item #	Description	Quantity Price Breaks
4780	U.S. Flag Clip-On	1, 5, 10, 20, 50 dz.
4781	Checkered Flag Clip-On	"
4782	Certified Pre-Owned Flag Clip-On	"



Item # 4781



Item # 4780

Item # 4782

Underhood Signs

Giant Red letters printed on bright white stock. May help to avoid local sign ordinances.

- Three kits available SALE - SAVE - LEASE
- Kit includes all letters
- Available in Red
- Size 30" x 42"
- Made of durable 5 mil. corrugated plastic
- Weatherproof and easy to use
- Fade resistant
- Packaged 1 kit per box

Flexible material allows letters to wedge under any hood. The car's normal hood support is still used to hold the hood up.



Stock Item

Description	Item #	Quantity Price Breaks
SALE Kit - Red	4730	1, 2, 4, 8, 12
SAVE Kit - Red	4732	"
LEASE Kit - Red	4734	"

Windshield Markers

These markers are sure to get your customer's attention. Use on windshields, glass, plastic, metal, wood or vinyl. Water-based paint.

Uni Posca Paint Markers

- Bright Bold Colors - Quick Drying
- Water Proof and Fade Resistant
- Non toxic & Odorless
- Available in 2 Sizes
- Packaged 1 marker per pack

Large Posca (PC-17K)

- Size 5/8" Tip - 4 3/4" Long
- Available in Standard Colors (White, Yellow, Red & Pink)

Small Posca (PC-85F)

- Size 1/4" Tip - 6" Long
- Available in Fluorescent Colors (Yellow, Green, Orange, Red & Pink)



**Large Poscas - 5/8" Tip
Standard Colors
White - Yellow - Red - Pink
PC-17K**

Stock Items

**Small Poscas - 1/4" Tip
Fluorescent Colors
Yellow - Green - Orange -
Red - Pink
PC-85F**



Item #	Description	Quantity Price Breaks
4740	Large Posca - White	1, 3, 5, 10, 20
4741	Large Posca - Yellow	"
4742	Large Posca - Red	"
4743	Large Posca - Pink	"

Item #	Description	Quantity Price Breaks
4745	Small Posca - Fl. Yellow	1, 3, 5, 10, 20
4746	Small Posca - Fl. Green	"
4747	Small Posca - Fl. Orange	"
4748	Small Posca - Fl. Red	"
4749	Small Posca - Fl. Pink	"

"Stuff From My Old Car" Storage Box

Item #475

- 15" W x 12" L x 10" D
- White cardboard box with blue print
- Easy to store and fold
- Top has ample space for dealer label or business card
- Packaged 25 boxes per pack

Help your customers transfer items from their old car to their new car with this easy-to-use storage box.



Stock Item

Item #	Quantity Price Breaks
475	25, 50, 100, 200, 300

Lease Odometer Statement

This form is guaranteed to work on any pre-programmed printer.

Complies with all federal mileage disclosure laws.

Form #ODOM-489-L

- 5-2/3" x 9-1/8"
- 3 Part, Snap-Out, Carbonless – White, Canary, Pink
- Prints in Blue Ink
- Packaged 100 per pack

Form #	Item #	Quantity Price Breaks
ODOM-489-L	843	100, 200, 500, 1000, 2000

Stock Item

ODOMETER DISCLOSURE STATEMENT
LEASED VEHICLE

Federal law (and State law, if applicable) requires that the lessor disclose the mileage to the lessee in connection with the transfer of ownership. Failure to complete or making a false statement may result in fines and/or imprisonment. Complete disclosure form below and return to lessor.

I, _____ (name of person making disclosure)
(Print)

state that the odometer now reads _____ (no tenths) miles and to the best of my knowledge that it reflects the actual mileage of the vehicle described below, unless one of the following statements is checked.

☐ (1) I hereby certify that to the best of my knowledge the odometer reading reflects the amount of mileage in excess of its mechanical limits.

☐ (2) I hereby certify that the odometer reading is NOT the actual mileage.

MAKE	MODEL	BODY TYPE
VEHICLE IDENTIFICATION NUMBER		YEAR

LESSOR'S NAME _____

LESSEE'S ADDRESS (STREET) _____

CITY _____ STATE _____ ZIP CODE _____

☒ LESSEE'S SIGNATURE _____

DATE OF STATEMENT _____

LESSOR'S NAME _____

LESSOR'S ADDRESS (STREET) _____

CITY _____ STATE _____ ZIP CODE _____

DATE DISCLOSURE FORM SENT TO LESSEE _____

DATE COMPLETED DISCLOSURE FORM RECEIVED FROM LESSEE _____

☒ LESSOR'S SIGNATURE _____

FORM # ODOM-489-L U700 IN U.S.A.

Odometer Disclosure Statements

Form #ODOM-933

This 2-part odometer statement is compatible with ADP* System.

- 5-2/3" x 8-3/8"
- 2 Part, Snap-Out, Carbonless – White, Canary
- Prints in Brown Ink
- Packaged 100 per pack

Form #	Item #	Quantity Price Breaks
ODOM-933	840	100, 200, 500, 1000, 2000

Stock Item

Form #ODOM-CT

This odometer statement is a short form which will line up perfectly to the pre-programmed printer.

- 5-2/3" x 8-1/4"
- 3 Part, Snap-Out, Carbonless – White, Canary, Pink
- Prints in Black Ink
- Packaged 100 per pack

Form #	Item #	Quantity Price Breaks
ODOM-CT	839	100, 200, 500, 1000, 2000

Stock Item

Odometer Disclosure Statements

Form #ODOM-65-3

- 5-2/3" x 9-1/8"
- 3 Part, Carbonless – White, Canary, Pink
- Prints in Blue Ink with Blue Screen on Part 1
- 2 File Holes for Easy Posting
- Meets all legal requirements
- Packaged 250 per pack

Stock Item

Form #	Item #	Quantity Price Breaks
ODOM-65-3	842	250, 500, 1000, 2000, 3000

Form #ODOM-103-N

- 5-2/3" x 9-1/8"
- 3 Part, Carbonless – White, Canary, Pink
- Prints in Blue Ink with Blue Screen on Part 1
- 2 File Holes for Easy Posting
- Meets all legal requirements
- Packaged 250 per pack

Stock Item

Form #	Item #	Quantity Price Breaks
ODOM-103-N	841	250, 500, 1000, 2000, 3000

License Plate Screws

Stock Items

Item #4860

- Thumb Screw - American 1-1/8" x 7/8"
- Packaged 50 per box



Item #4861



Item #4860

Item #4861

- Thumb Screw - Metric
- Packaged 25 per box



Item #4864

Item #4862

- Slotted Hex Head - #14 x 3/4"
- Packaged 100 per box



Item #4862



Item #4863

Item #4863

- Slotted Hex Head - 6mm x 16 mm
- Packaged 100 per box

Item #4864

- Nylon Insert - 3/8" (#14)
- Packaged 100 per box

Item #	Quantity Price Breaks
4860	1, 2, 5, 10, 20 box
4861	"
4862	"

Item #	Quantity Price Breaks
4863	1, 2, 5, 10, 20 box
4864	"

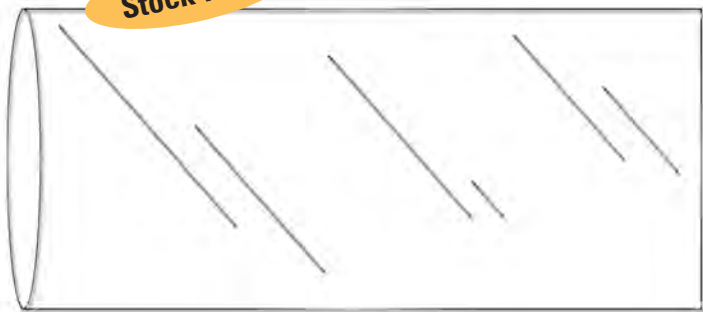
License Plate Tag Bags

These inexpensive yet very effective temporary tags bags will keep your tags dry and legible. Keeping you and your customer legal. These bags can also be used to protect license plates from wear while in storage or in transit.

- 6-3/8" x 15"
- 2 mil. plastic heavy duty bag
- Packaged 100 per pack

Extra long bag allows users to fold end of bag over to help ensure that the tag will not get wet.

Stock Item



Item #835

Item #	Quantity Price Breaks
835	1, 2, 5, 10, 20

Demo License Plate Holders

Stock Items

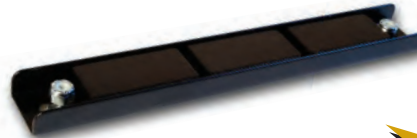
Item #4850

DEM-O *Jiffy* Plate is made of neoprene and is secured strongly in the trunk, hood or rear window by knobs on the back of the straps. The double neoprene holder securely surrounds, holds and protects the license plate from wear and rust. Will not scratch painted surfaces.



Item #4851

BAR MAGNETS WITH SCREWS are in an 8" channel with three magnets. The entire assembly is coated with a baked-on poly finish with 2 sturdy locknuts.



Item #4855

EXTRUDED RUBBER COATED BAR MAGNET WITH SCREWS. This magnet provides more protection to the vehicle, same holding power, no cloth tape to wear out and NO metal to scratch the car. High quality hardware included.



Item #4852

TAG BAG – Quickly and easily displays a license plate for a test drive.

- Long lasting, heavy duty vinyl
- Pouch size is 8-1/2" x 15"
- Secures to car by trunk lid or back window of SUV
- Won't scratch car finish



Item #	Description	Quantity Price Breaks
4850	DEM-O <i>Jiffy</i> Plate	1, 5, 10, 25, 50
4851	Bar Magnets with Screws	"
4852	Tag Bag	"
4855	Ext. Rubber Bar Magnet	"

License Plate Protector

Form #TH-100

- 12-1/2" x 6-3/4"
- Packaged 100 per box

Use this heavy duty clear plastic sleeve to protect the temporary tag on the vehicle until permanent tag is issued.

Stock Item



Form #	Item #	Quantity Price Breaks
TH-100	834	100, 200, 400, 600, 1000

Fuel Purchase Order Books

These coil bound Purchase Order Books include a heavy stock cover to prevent write-through.

The best system to control fuel purchases in the dealership. Control copy remains in book.

Form #NC-124-3-Fuel (Plain or Imprinted)

- 8-1/2" x 11"
- 3 Part, 200/book (2-3/4" x 7-1/2")
- Carbonless - White, Canary, Pink
- Prints in Black Ink
- 4 P.O.'s per page.
- Plain books, no selection of starting number
- Available Imprinted in Red Ink on quantities of 5 or more books.
- Packaged 1 book

Form #	Item #	Quantity Price Breaks
NC-124-3-Fuel Plain	636	1, 5, 10, 15, 25 books
NC-124-3-Fuel Imprinted	636-IMP	5, 10, 15, 25, 50 books

The image shows three pages of a spiral-bound Fuel Purchase Order Book. Each page is a form for purchasing fuel. The top of each page has a header with the form number (e.g., 0800, 0801, 0802) and a note '(4 Line Imprint Available Here)'. Below the header is a section for 'FUEL PURCHASE ORDER' with fields for 'TO', 'DATE', 'INVOICE NUMBER', 'QUANTITY', 'DESCRIPTION', 'PRICE', and 'AMOUNT'. There are checkboxes for 'GASOLINE' and 'DIESEL'. Below this is a section for 'FOR STOCK #' with checkboxes for 'NEW CAR', 'PARTS', and 'USED CAR'. At the bottom of each page is a section for 'FOR JOB NO.', 'ACCOUNT', and 'APPROVED BY'.

Credit Memo Books

Form #RL-113 (Plain or Imprinted)

- 7-1/2" x 11"
- 3 Part, 150/book (3-2/3" x 6-1/2")
- Carbonless - White, Canary, Pink
- Prints in Red Ink
- Plain books, no selection of starting number
- Available Imprinted in Black Ink on quantities of 5 or more books.
- Packaged 1 book

Parts drivers or counter personnel can issue a credit memo on the spot with this handy Credit Memo Book! Can be ordered plain or imprinted with your information.

Form #	Item #	Quantity Price Breaks
RL-113 Plain	638	1, 5, 10, 15, 25 books
RL-113 Imprinted	638-IMP	5, 10, 15, 25, 50 books

The image shows three pages of a spiral-bound Credit Memo Book. Each page is a form for issuing a credit memo. The top of each page has a header with the form number (e.g., CR 01234, CR 01235, CR 01236) and a note '(4 Line Imprint Available Here)'. Below the header is a section for 'CREDIT MEMO' with fields for 'TO', 'DATE', 'INVOICE NUMBER', 'QUANTITY', 'DESCRIPTION', 'PRICE', and 'TOTAL'. There is a large diagonal watermark that says 'CREDIT MEMO'. At the bottom of each page is a section for 'FOR R.O. No.', 'ACCOUNT', and 'By'.